

## Herbal Supplement

(Ginkgo Biloba)

Sample Category: Food / Plant / Animal Tissue

### Sample Requirements

Sample Weight: 0.25g

Reagents: 10mL Conc. HNO<sub>3</sub>

Vessels: 35mL glass, quartz, and Teflon™ lined

### Microwave Heating Program

Control Style: Ramp To Temperature

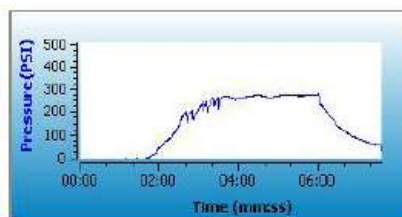
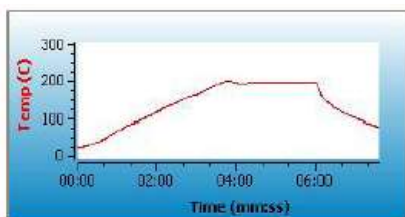
Pressure Mode: Organic

### Recommended Equipment



Discover SP-D

Stage	Temp (°C)	Ramp Time	Hold Time	Pressure (psi)	Power (W)	Stirring
1	200	4:00	2:00	400	300	Med



### Notes:

1. If using a vial other than the recommended choice, adjust sample size and pressure limit to values appropriate for the vessel chosen.

### General Precautions:

This procedure is a reference for sample digestion using a CEM System and may need to be modified or changed to obtain the required results on your sample