

Explorer Fume Cabinet Retrofit Instructions

Parts Required:

Retrofit Kit - 730099

- 140010 – Adapter Plate (2)
- BR800191 – M4 x 14 Screw (2)
- BR800191 – M4 x 16 Screw (2)
- BR800048 – M3 x 14 Screw (2)
- BR869000 – 2.5mm Hex Key
- BR869018 – 3mm Hex Key

In order to mount the CEM Fume Cabinet onto an existing Explorer, an adapter plate must be installed on the bottom of the Explorer-48 base. The following instructions explain the installation of the plate and subsequently the installation of the Fume Cabinet.

1. Figure 1 illustrates the holes in the base of the Explorer that will be used to mount the plates on each side of the base. These holes will not be visible from the top of the unit.



Figure 1

2. Secure the left plate to the base using two M4x14 screws in the front and one M3x14 screw in the back. Secure the right plate, including the calibration tool holder, with two M4x16 screws in the front and one M3x14 screw in the back.



Figure 2



Figure 3

3. Once the plates are secured on each side of the base, partially insert the M5x16 Teflon coated screws provided with the fume cabinet into back hole of each plate.



Figure 4

4. Slide the slots in the back of the fume cabinet over the two screws installed in step 3. Align the two front holes of fume cabinet with the front holes of the plates and install the two M5x16 Teflon coated screws. Tighten all screws.

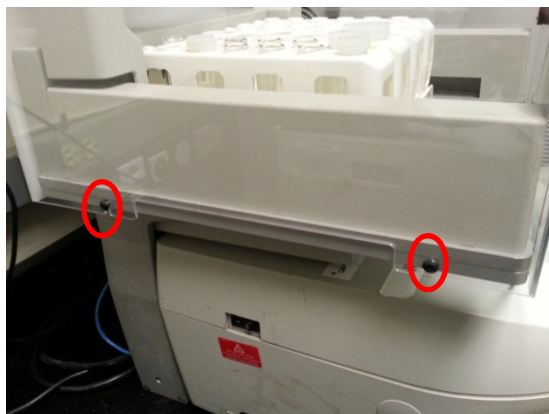


Figure 5

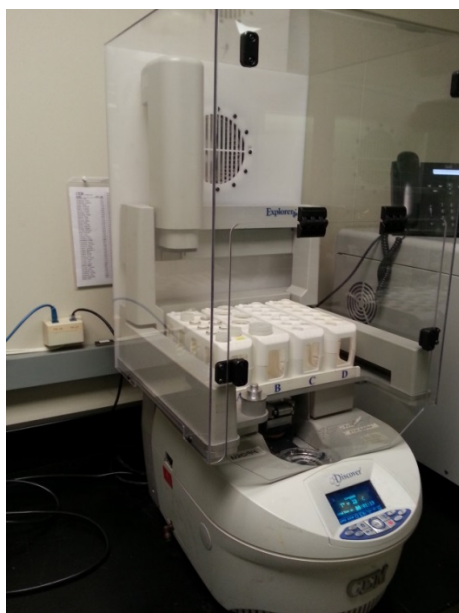


Figure 6