

## Filter Paper

(Cellulose)

Sample Category: Miscellaneous

### Sample Requirements

Sample Weight: 1 paper (approx. 0.15 g)  
 Reagents: 5mL Conc. HNO<sub>3</sub>, 5mL Deionized water  
 Vessels: 35mL glass, quartz, and Teflon™ lined

### Microwave Heating Program

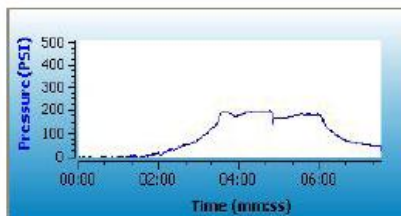
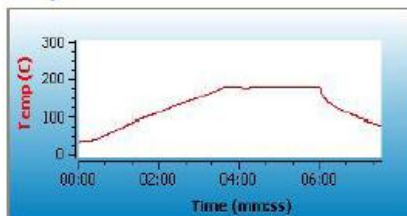
Control Style: Ramp To Temperature  
 Pressure Mode: Organic

### Recommended Equipment



Discover SP-D

Stage	Temp (°C)	Ramp Time	Hold Time	Pressure (psi)	Power (W)	Stirring
1	180	4:00	2:00	300	300	Med



### Notes:

1. If using a vial other than the recommended choice, adjust sample size and pressure limit to values appropriate for the vessel chosen.

### General Precautions:

This procedure is a reference for sample digestion using a CEM System and may need to be modified or changed to obtain the required results on your sample