

CEM Trac System Check Standard Procedure



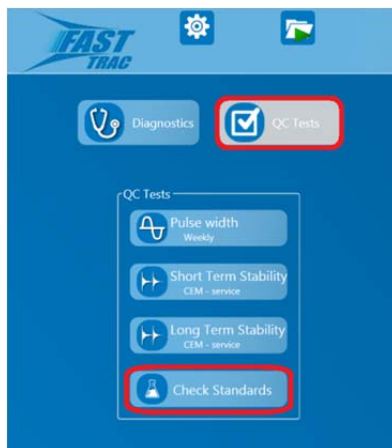
1. Log in as an administrative user, using either the default ADMIN account or an administrative account specific to the user.



2. Select the MENU button and select “Maintenance” from the drop-down menu.
3. Select the “QC Tests” button.



4. Select the “Check Standards” button from the available QC choices.



- From the “Check Standard” test page, select “Run” to begin the test. Do not select the “Edit” button unless instructed to do so by a CEM Representative.

Note: This test requires the four (4) Check Standard Oil Tubes with matching serial numbers as well as the Normalization Tube. The tubes will require conditioning in the provided Heater Block for at least one (1) hour prior to continuing the test. Ensure that the air bubble in each tube is above the oil, with no air bubbles separating the oil, as indicated below.

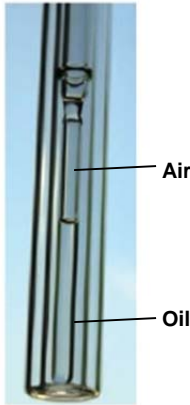


Figure 1
CORRECT

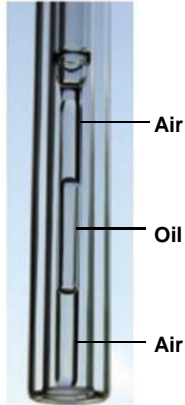


Figure 2
INCORRECT

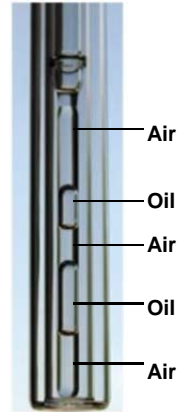
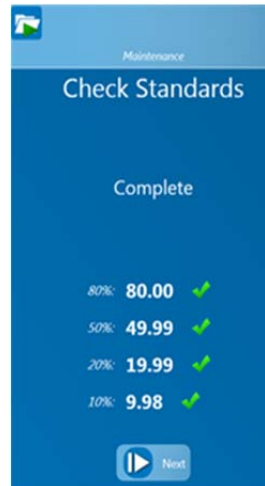


Figure 3
INCORRECT

- Once the tubes are conditioned and ready for testing, follow the instructions on the screen. Ensure that the tube matches the part number requested by the system.
- A green check indicates the Trac System is functioning properly. A yellow caution icon indicates the tube value is not within specification. Repeat the test to ensure no errors occurred. If it continues to fail, contact the CEM Service Department for additional instructions.



Passing Value, System Functional



Out of Spec, contact CEM Service



CEM Corporation
PO Box 200
Matthews, NC 28106-0200
(704) 821-7015
(800) 726-5551 (Service Hotline)
(800) 726-3331 (Sales Hotline)
(704) 821-7894 (Fax)
info@cem.com (email)
www.cem.com (website)

France

CEM µWave S.A.S.
Immeuble Ariane
Domaine Technologique de Saclay
4, rue René Razel
91892 ORSAY Cedex
33 (01) 69 35 57 80 (Phone)
33 (01) 60 19 64 91 (Fax)
Info.fr@cem.com (Email)
www.cemfrance.fr (Website)

Germany

CEM GmbH
Carl-Friedrich-Gauss-Str. 9
47475 Kamp-Lintfort
(49) 2842-9644-0 (Phone)
(49) 2842-9644-11 (Fax)
info@cem.de (Email)
www.cem.de (Website)

Ireland

CEM Technology (Ireland) Ltd.
Business Centre
9a Plato Business Park
Damastown
Dublin 15
K+353 (0) 1 885 1752 (Phone)
+353 (0) 1 885 1601 (Fax)
Info.ireland@cem.com (Email)
www.cemmicrowave.co.uk (Website)

Italy

CEM S.R.L.
Via Dell' Artigianato, 6/8
24055 Cologno al Serio (Bg)
(39) 35-896224 (Phone)
(39) 35-891661 (Fax)
Info.srl@cem.com (Email)
www.cemmicroonde.com (Website)

Japan

CEM Japan K.K.
1-18-10 Takanawa
Minato-ku, Tokyo
108-0074
+81-3-5793-8542 (Phone)
+81-3-5793-8543 (Fax)
info@cemjapan.jp (Email)
www.cemjapan.co.jp (Website)

United Kingdom

CEM Microwave Technology Ltd.
2 Middle Slade
Buckingham Industrial Estate
Buckingham MK181WA
(44) 1280-822873 (Phone)
(44) 1280-822342 (Fax)
Info.uk@cem.com (Email)
www.cemmicrowave.co.uk (Website)